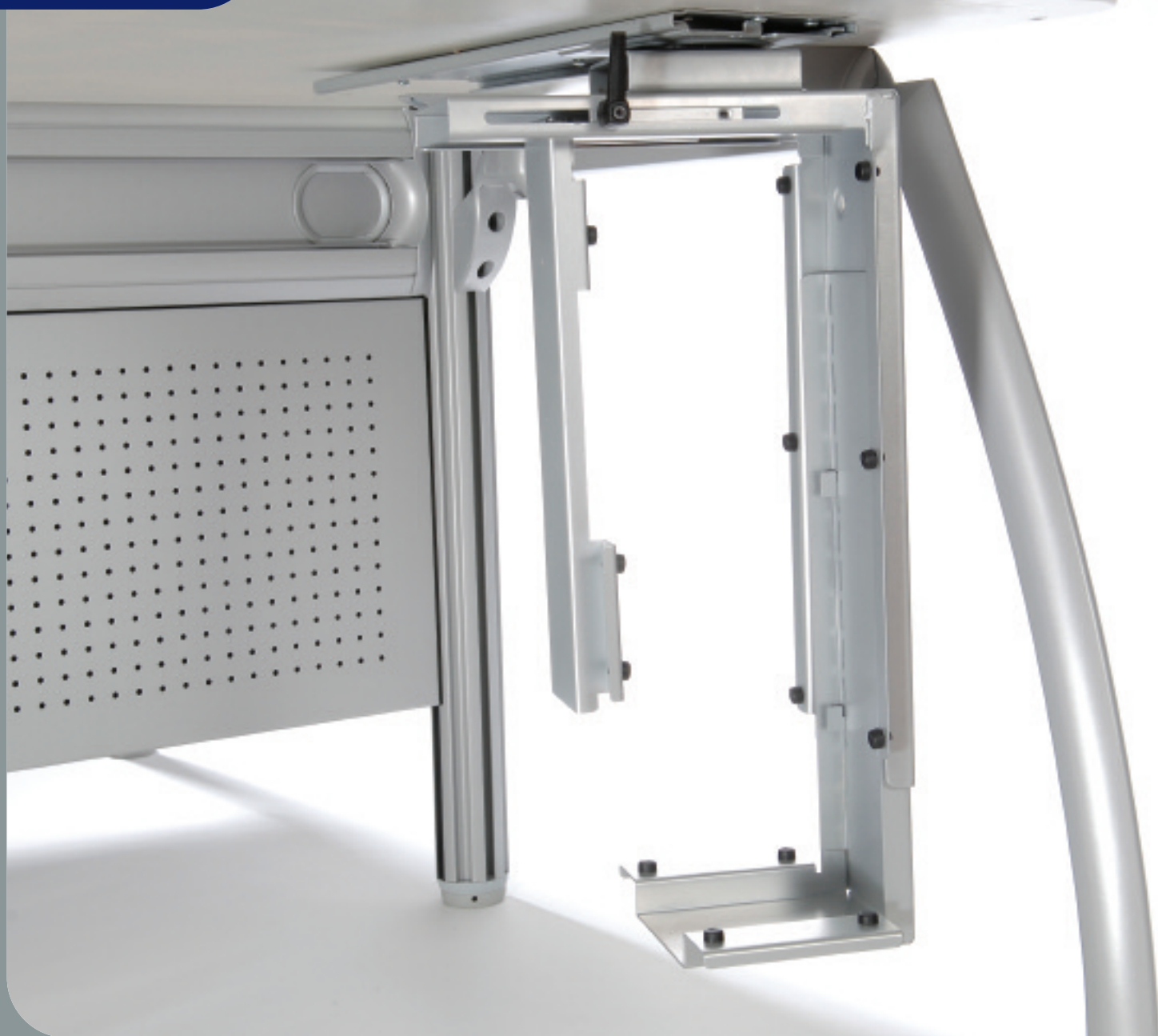




stream / accessories

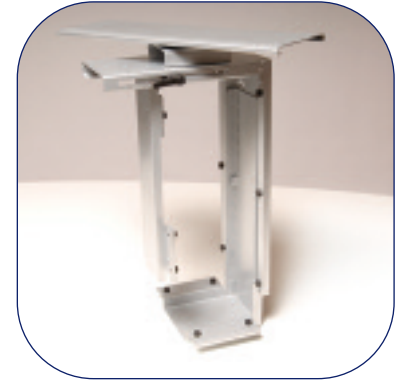
cpu mounts





CPU Fixed (CMS1512)

- Installed underneath the desk for fastening the CPU vertically
- Adjustable frame from 50mm to 275mm for width
- Adjustable frame from 380mm to 580mm for height
- Easy installation
- Quick IT access to rear of CPU



CPU Slide-rotate (CMS1512-CMS1513)

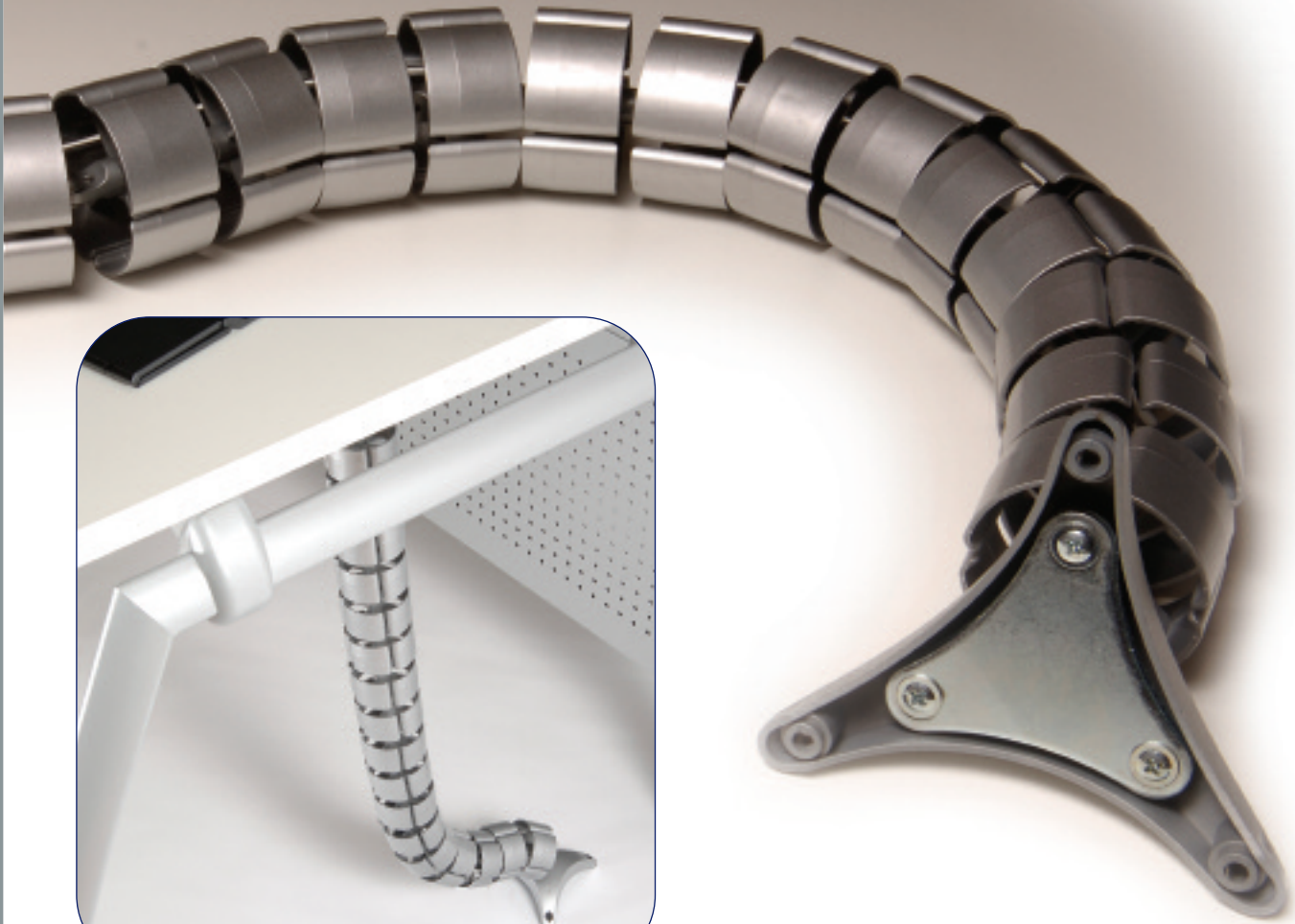
- Slide track for back and forth movement
- Rotating capability of 360 degrees
- Installed underneath the desk for fastening the CPU vertically
- Adjustable frame from 50mm to 275mm for width
- Adjustable frame from 380mm to 580mm for height
- Easy installation
- Quick IT access to rear of CPU



cable tidy

Cable Tidy (CMS1515)

- Can be used either in vertical or horizontal positions
- Easy to assemble
- Connected rings have an uninterrupted tunnel in order to organise your cables
- Weighted at one end to stop movement when cables are inserted
- Total length 790mm



adjustable footrest

Adjustable Footrest (CMS1514)

- Product size 450mm length, 350mm width, 70mm height.
- 4 angle height adjustment to 6, 12, 16, 25 degrees
- Load capacity of 80kg
- Non slip foot pad and floor pads.





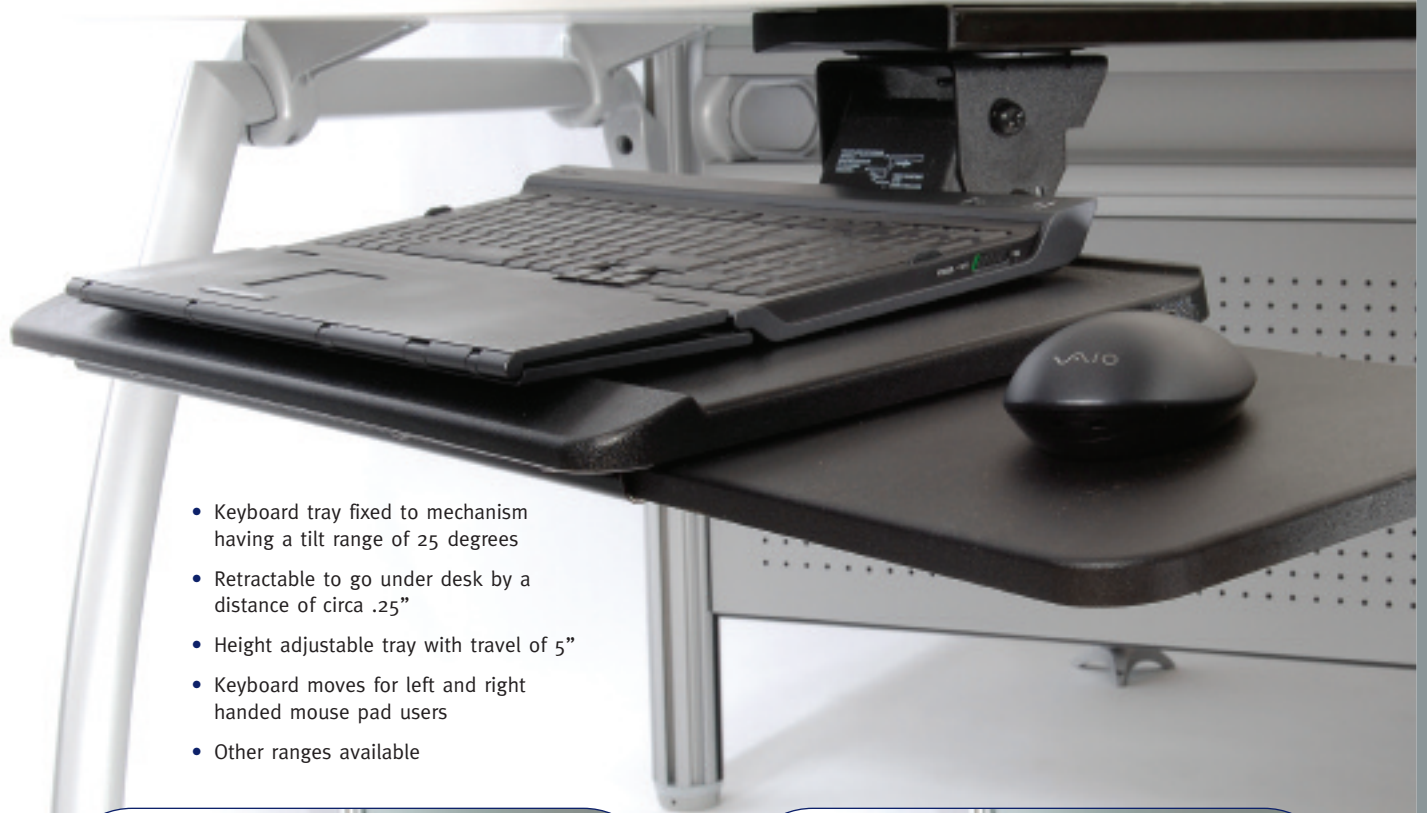
Notebook Stand

- Product size, 320mm (W) x 250mm (D) x 30mm (H)
- 5 positions of angle adjustment to 4, 14, 23, 33 and 43 degrees
- Ergonomic design to improve viewing of you laptop screen

Notebook Stand plus

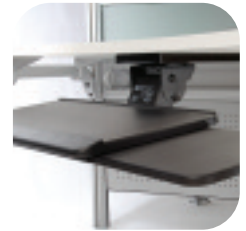
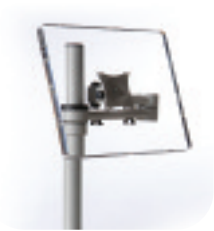
- Movement features as Notebook Stand above
- Built in 4 port USB hub (ver. 2.0)
- Compatible with Windows 98 – ME – 2000 – XP – MAC OS 8x 9x

retractable keyboard tray with mouse pad



- Keyboard tray fixed to mechanism having a tilt range of 25 degrees
- Retractable to go under desk by a distance of circa .25"
- Height adjustable tray with travel of 5"
- Keyboard moves for left and right handed mouse pad users
- Other ranges available





CMS Ergonomics
Downsview House
Grove Technology Park
Wantage
OXON OX12 9FF

T: 01235 773373
F: 01235 773371
W: www.cmsergonomics.com
E: sales@cmsergonomics.com

Distributed by

