



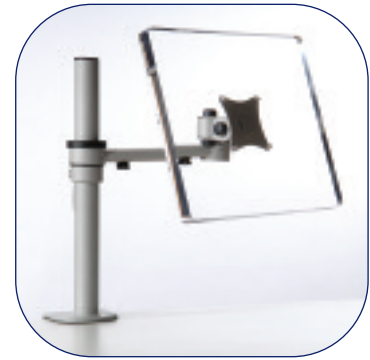
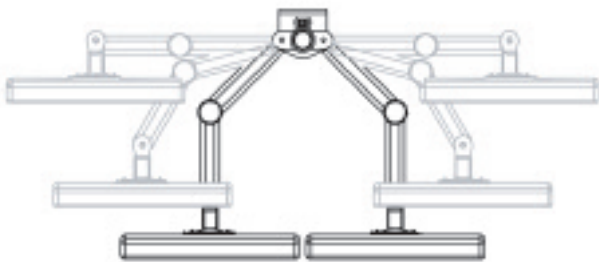
stream / accessories

stream



Stream dual beam monitor arm (CMS1510)

- Fully height adjustable with quick height fixing clasp to the rear of the post.
- Has an extended reach of 20" from the post mounting and can completely fold flush back to the post.
- Comes ready assembled for ease of installation and can take monitors up to 19" with a weight capacity of up to 10kg.
- Clamp fitting to the rear of desk or work surface (other mountings available).
- Compatible for both 75mm and 100mm VESA standard monitor mounts.
- Intergrated cable management.
- Light silver finish (others available).

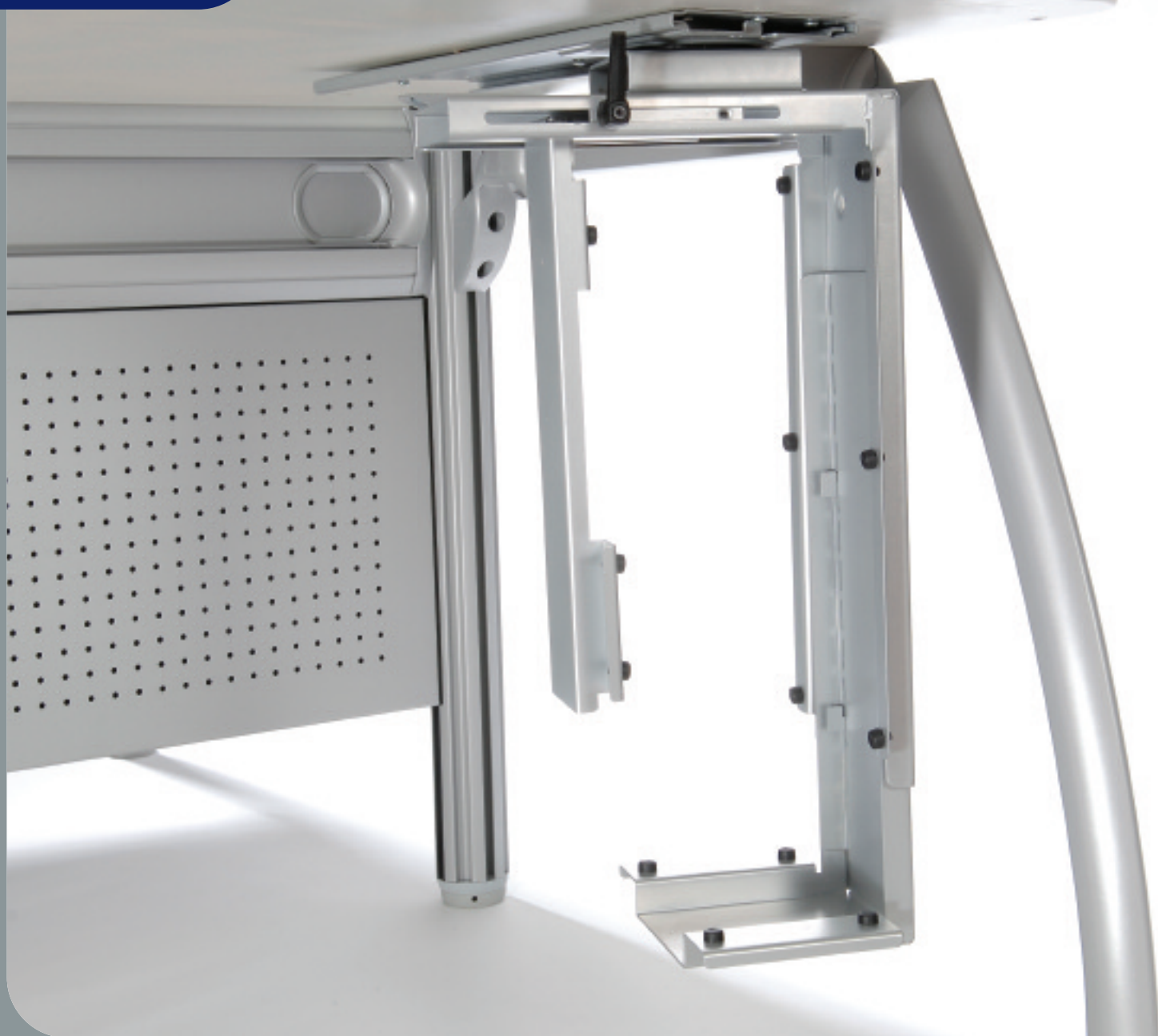


Double LCD arm

This System also has the facility to have a 2 screen mounting configuration from a single post with a loading capacity of 15kgs (see diagram)

For other applications contact our sales team on **01235 773373**.

cpu mounts





CPU Fixed (CMS1512)

- Installed underneath the desk for fastening the CPU vertically
- Adjustable frame from 50mm to 275mm for width
- Adjustable frame from 380mm to 580mm for height
- Easy installation
- Quick IT access to rear of CPU

CPU Slide-rotate (CMS1512-CMS1513)

- Slide track for back and forth movement
- Rotating capability of 360 degrees
- Installed underneath the desk for fastening the CPU vertically
- Adjustable frame from 50mm to 275mm for width
- Adjustable frame from 380mm to 580mm for height
- Easy installation
- Quick IT access to rear of CPU



cable tidy

Cable Tidy (CMS1515)

- Can be used either in vertical or horizontal positions
- Easy to assemble
- Connected rings have an uninterrupted tunnel in order to organise your cables
- Weighted at one end to stop movement when cables are inserted
- Total length 790mm

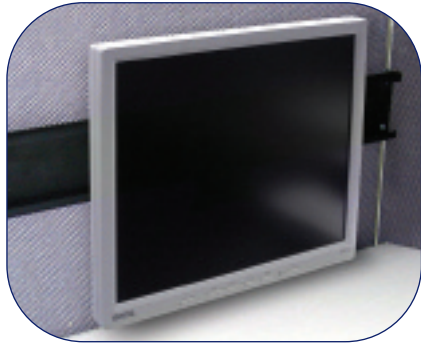


adjustable footrest

Adjustable Footrest (CMS1514)

- Product size 450mm length, 350mm width, 70mm height.
- 4 angle height adjustment to 6, 12, 16, 25 degrees
- Load capacity of 80kg
- Non slip foot pad and floor pads.





Pivot and Swing Arm I and II

- This application attaches to a Screen Partition or can be Wall mounted
- Total length of slide rail is 900mm
- Load capability 20kgs
- Compatible with 75mm or 100mm VESA Monitor fittings
- The Swing Arm I has a Monitor tilt movement of up to 28 degrees



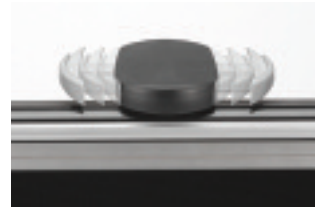
Pivot and Swing Arm I



Pivot and Swing Arm II

Webcam Holder and Copy Holder

- The slide track of 420mm attaches to the top of the monitor
- Webcam holder has an angle pitch of +/- 30 degrees
- Width adjustable webcam holder from 80mm to 120mm
- Copy holder has a 270 degree tilt of angle and 360 degree swivel range





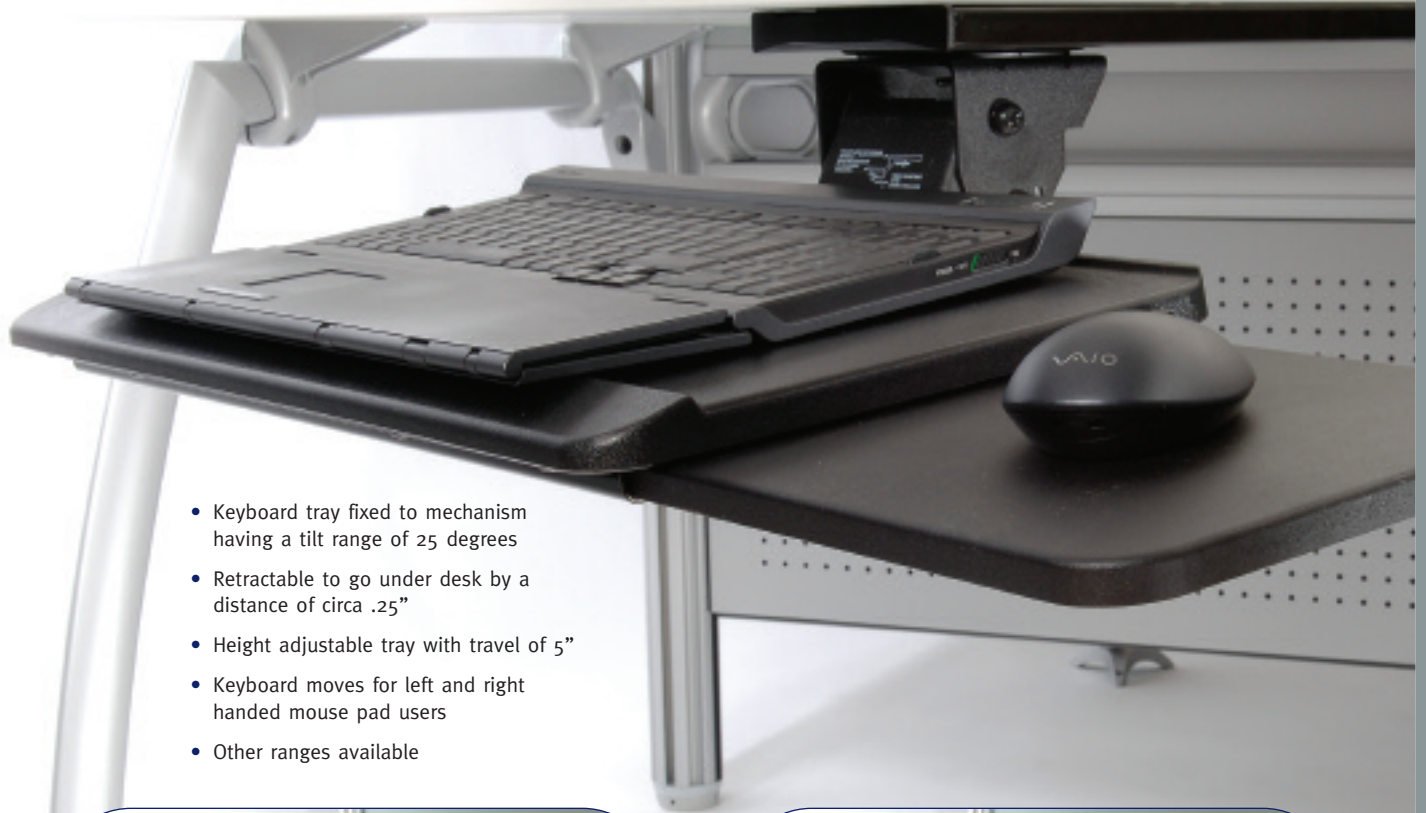
Notebook Stand

- Product size, 320mm (W) x 250mm (D) x 30mm (H)
- 5 positions of angle adjustment to 4, 14, 23, 33 and 43 degrees
- Ergonomic design to improve viewing of you laptop screen

Notebook Stand plus

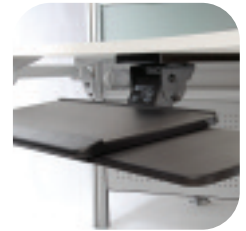
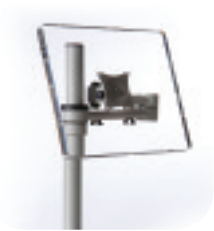
- Movement features as Notebook Stand above
- Built in 4 port USB hub (ver. 2.0)
- Compatible with Windows 98 – ME – 2000 – XP – MAC OS 8x 9x

retractable keyboard tray with mouse pad



- Keyboard tray fixed to mechanism having a tilt range of 25 degrees
- Retractable to go under desk by a distance of circa .25"
- Height adjustable tray with travel of 5"
- Keyboard moves for left and right handed mouse pad users
- Other ranges available





CMS Ergonomics
Downsview House
Grove Technology Park
Wantage
OXON OX12 9FF

T: 01235 773373
F: 01235 773371
W: www.cmsergonomics.com
E: sales@cmsergonomics.com

Distributed by

