



KONCEPT



*Z-Bar®*

### **KONCEPT from Ergo**

Combining the benefits of reduced running costs and lower heat generation along with an elegant slim line look we are pleased to offer the **KONCEPT LED** task lighting range.

The **KONCEPT** range offers award winning leading edge design in the manufacture of ergonomic task lights.

# KONCEPT Ergonomic LED Lighting



## Z-Bar®

Offering maximum reach and flexibility the Z-Bar® is available in 3 sizes: Z-Bar®, Z-Bar® Slim and Z-Bar® Mini. Its fully adjustable LED head can spin in its socket, sweep from side to side and rotate at the end of the arm to cast light in any desired direction.



## equo®

Winner of the **reddot** design award 2011.

equo® offers fingertip adjustment allowing the user full positioning flexibility. With over 800mm of reach the equo® offers unparalleled flexibility in positioning of the light source to achieve the perfect ergonomic working position.



**reddot** design award  
winner 2011



## UCX™

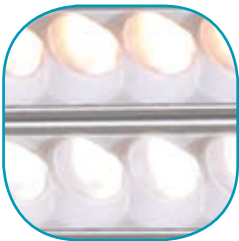
The UCX™ series of undercabinet lights bring easy, energy efficient lighting to any undercabinet space.

# Z-Bar®

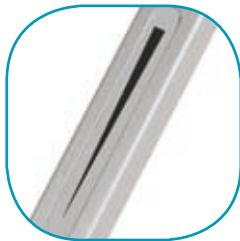
## Z-Bar® range

Offering maximum reach and flexibility the Z-Bar® is available in 3 sizes: Z-Bar®, Z-Bar® Slim and Z-Bar® Mini. Its fully adjustable LED head can spin in its socket, sweep from side to side and rotate at the end of the arm to cast light in any desired direction.

With fully dimmable control gear, a finger slide gives the user ultimate flexibility to select a specific lamp brightness – slide your finger along the touchstrip to dim gradually, or touch anywhere on the strip to jump directly to any brightness, including off.



*Warm (~3500k)  
or Daylight (~5000k)*



*Built-in touchstrip*



*Occupancy sensor  
(optional)*



*Integral cable  
management*



*Different mounting  
options*

ergo

*Other sizes in the Z-Bar® range.*



*Z-Bar®*

*Z-Bar® Slim*

*Z-Bar® Mini*

### **Z-Bar® Solo**

With all the energy saving and user friendly features of the Z-Bar® system, the Z-Bar® Solo comprising a single arm for a more compact design and a LED head able to fold flat against the body.

Available in 2 sizes – Z-Bar® Solo and Z-Bar® Solo Mini.



# Z-Bar®



Other mounting options include a desk clamp, wall mount, tool rail mount and through table mount. Compatible with optional occupancy sensor. Supplied as standard with weighted base.

Available in Black and Silver finishes.

Specials available on request.

## Z-Bar® Range Specifications

<b>LED Rated Lifespan</b>	50,000 hours
<b>Colour Temperature (Daylight)</b>	5,000 K
<b>Colour Temperature (Warm)</b>	3,500 K
<b>Colour Rendering Index (CRI)</b>	85
<b>Dimmer</b>	Built-in touchstrip
<b>Brightness Adjustability</b>	Continuous
<b>Colour Finish:</b>	Metallic Black, Silver
<b>Material</b>	Aluminium/Plastic
<b>Cord Colour</b>	Black
<b>Cord Length</b>	9'

*Also available Z-Bar® Floor  
for further details, please see our website*



	Z-Bar®	Z-Bar® Mini	Z-Bar® Slim	Z-Bar® Solo	Z-Bar® Solo Mini	Z-Bar® Floor
<b>Energy Consumption</b>	10.5 watts	7 watts	8.5 watts	8.5 watts	7 watts	10.5 watts
<b>Number of LEDs</b>	42 LEDs	28 LEDs	35 LEDs	35 LEDs	28 LEDs	42 LEDs
<b>Max. Brightness (15" above desk)</b>	224 fc	142 fc	168 fc	168 fc	142 fc	224 fc

equo®

ergo



equo®

Winner of the red<sup>dot</sup> design award 2011.

equo® offers fingertip adjustment allowing the user full positioning flexibility. With over 800mm of reach the equo® offers unparalleled flexibility in positioning of the light source to achieve the perfect ergonomic working position.



reddot design award  
winner 2011

equo®



#### equo®

The tilting head is fully adjustable and when the desired angle is set equo® will hold its position whenever the arm is raised or lowered.

With fully dimmable control gear, a finger slide gives the user ultimate flexibility to select a specific lamp brightness – slide your finger along the touchstrip to dim gradually, or touch anywhere on the strip to jump directly to any brightness, including off.



*Occupancy sensor  
(optional)*



*Warm (~3500k)  
or Daylight (~5000k)*



*180° rotatable lamp head*



*Built-in touchstrip*



The luminaire head rotates through 180°.

Compatible with optional occupancy sensor.

Specials available on request.

### equo® Range Specifications

<b>LED Rated Lifespan</b>	50,000 hours
<b>Colour Temperature (Daylight)</b>	5,000 K
<b>Colour Temperature (Warm)</b>	3,500 K
<b>Colour Rendering Index (CRI)</b>	85
<b>Dimmer</b>	Built-in touchstrip
<b>Brightness Adjustability</b>	Continuous
<b>Colour Finish</b>	Black, Silver, Orange
<b>Material</b>	Aluminium/Plastic
<b>Cord Colour</b>	Black
<b>Cord Length</b>	9'

	equo®	equo® Floor
<b>Energy Consumption</b>	6 watts	6 watts
<b>Number of LEDs</b>	28 LEDs	28 LEDs
<b>Max. Brightness (15" above desk)</b>	122 fc	122 fc



equo®

Also available equo® Floor  
for further details,  
please see our website.

# UCX™

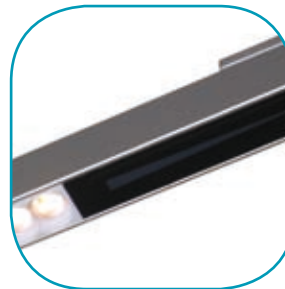
## UCX™

The UCX™ series of undercabinet lights bring easy, energy efficient lighting to any undercabinet space. Choose a length, and choose a mount. You can tilt forward or back, attach with magnets or screws, and daisy-chain multiple units to run on a single outlet. Chained units can be individually controlled or synced.

Slide your finger along the touchstrip to control power and brightness, or touch anywhere on the strip to jump directly to any brightness, including off.



*Warm (~3500k)  
or Daylight (~5000k)*



*Built-in touchstrip*



*Occupancy sensor (optional)*

Compatible with optional occupancy sensor.

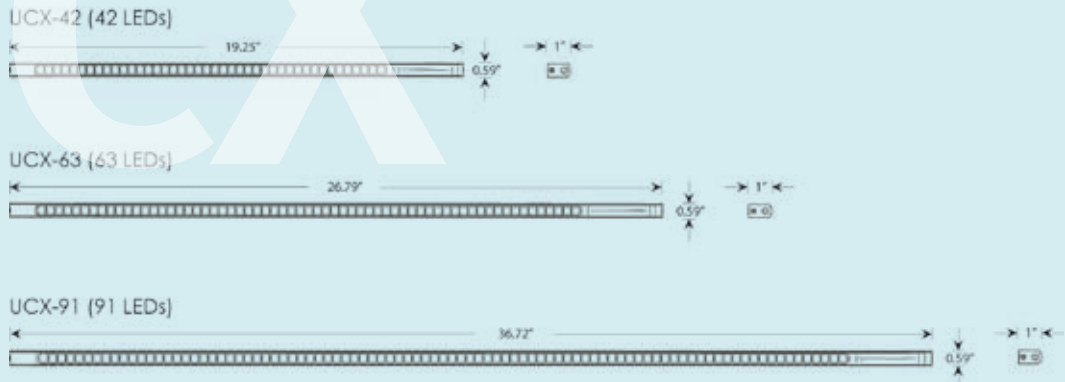


### UCX™ Specifications

<b>LED Rated Lifespan</b>	50,000 hours
<b>Transformer</b>	24 or 48 watts
<b>Colour Temperature (Daylight)</b>	5,000 K
<b>Colour Temperature (Warm)</b>	3,500 K
<b>Colour Rendering Index (CRI)</b>	85
<b>Dimmer</b>	Built-in touchstrip
<b>Brightness Adjustability</b>	Continuous
<b>Colour Finish</b>	Metallic Black, Silver
<b>Material</b>	Aluminum/Plastic

	UCX-42	UCX-63	UCX-91
<b>Energy Consumption</b>	11 watts	17 watts	24 watts
<b>Number of LEDs</b>	42 LEDs	63 LEDs	91 LEDs
<b>Max. Brightness (18" above desk)</b>	186 fc	210 fc	234 fc
<b>Maximum Chained Units</b>	4 units	2 units	2 units

# UCX™





ergo



Please contact us for  
further information.

**Ergo**

01235 773373

[sales@cmsergonomics.com](mailto:sales@cmsergonomics.com)

[www.cmsergonomics.com](http://www.cmsergonomics.com)